



Rabbit anti CaM Kinase IV Polyclonal Antibody

Alternative Name(s): calcium/calmodulin-dependent protein kinase IV; CAMK4

Order Information

- **Description:** CaM Kinase IV
- **Catalogue:** 500-10604
- **Lot:** See label
- **Size:** 100ug/200ul
- **Host:** Rabbit
- **Clone:** nan
- **Application:** IHC(P), WB
- **Reactivity:** Hu, Rt

ANTIGEN PREPARATION

A synthetic peptide derived from aa 457-474 of rat CaM Kinase IV

BACKGROUND

Calmodulin dependent protein kinases (CaM kinases) consist of a family of Ser/Thr protein kinases including CaMKI, CaMKII and CaMKIV. CaMKs are considered to play a central role in many cellular functions in response to Ca²⁺ signaling, including synthesis and secretion of neurotransmitters, axonal transport, long term potentiation etc. CaM kinase IV is abundantly expressed in the brain, in the thymus, and is localized to the cytoplasm and nucleus.

PURIFICATION

The Rabbit IgG is purified by Epitope Affinity Purification

FORMULATION

This affinity purified antibody is supplied in sterile Phosphatebuffered saline (pH7.2) containing antibody stabilizer

SPECIFICITY

This antibody reacts with human and rat CaM Kinase IV. The other species are not tested.

STORAGE

The antibodies are stable for 24 months from date of receipt when stored at -20oC to -70oC. The antibodies can be stored at 2oC-8oC for three month without detectable loss of activity. Avoid repeated freezing-thawing cycles.

APPLICATIONS/SUGGESTED WORKING DILUTIONS*

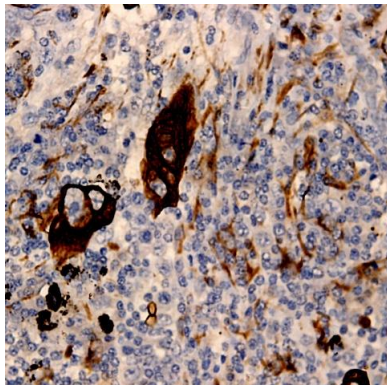
- Western Blot: 0.1-1 µg/ml
- ELISA: 0.01-0.1 µg/ml
- Immunoprecipitation: 2-5 µg/ml
- IHC: 2-10 µg/ml
- Flow cytometry: Not tested
- Molecular Weight: 60.0
- Positive Control: Kidney Tissue
- Cellular Location: Cell Membrane

*Optimal dilutions should be determined by researchers for the specific applications.

FOR RESEARCH USE ONLY.

AbboMax, Inc 2528 Qume Drive, Suite 8, San Jose, California 95131, USA
1 408-573-1898 (Tel). 1 408-573-1858 (Fax). www.abbomax.com info@abbomax.com

DATA ATTACHMENTS



Immunohistochemistry: Human Breast carcinoma stained with Rabbit anti-CaM Kinase IV (Cat# 500-10604) at 1:100 for 30 min, RT. (Staining of formalin-fixed tissues requires boiling tissue section in 10 mM Citrate Buffer, pH 6.0 for 10 min followed by cooling at RT for 20 min.

REFERENCES

FOR RESEARCH USE ONLY.

AbboMax, Inc 2528 Qume Drive, Suite 8, San Jose, California 95131, USA
1 408-573-1898 (Tel). 1 408-573-1858 (Fax). www.abbomax.com info@abbomax.com